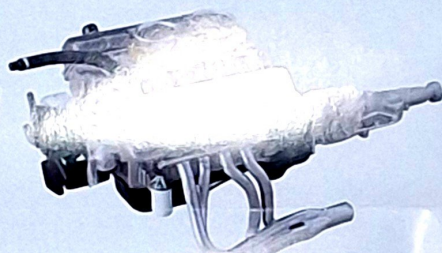
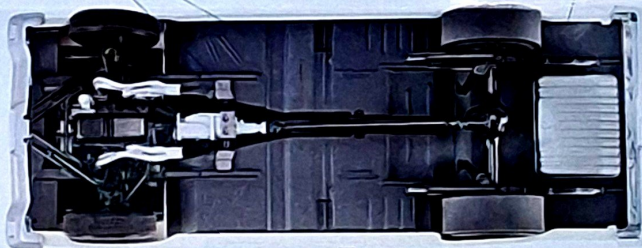




Note the use of a variety of finishes, from flat to high gloss, on various parts of the chassis. This adds realism and interest to the completed model. See below for color suggestions.

Note the subtle weathering on various "wear" parts of the chassis, which provide a realistic appearance to the model's underside.



CHROME TRIM & BADGES

We recommend Bare Metal Chrome Foil, and have included decals for badges if you do not wish to paint them, however, very nice results can be achieved with Chrome Silver paint, a fine brush and a steady hand!

MOEBIUS MODELS

enthusiastic 1/25th scale plastic model kit

MODEL KING



Arrive "The Farmer's Bestride"

the COMET

1965 MERCURY CYCLONE A/FX

Part No. 1223

IMPORTANT - READ THIS FIRST

Before assembling model, study pictures carefully. These instructions include detailed drawings and images of an actual build-up for reference. You can also refer to photos on the packaging. In addition, you will find the following tips helpful:

- This model kit is molded of styrene plastic - use only styrene-compatible glues or cements.
- Apply cement to **inside surfaces only**; avoid getting cement on outer surfaces of model sections.
- Use cement sparingly and avoid getting cement on hands, so as not to mar or smear plastic surfaces.
- Do not hurry; work carefully and patiently.
- Before cementing, it is advisable to assemble parts dry (without cement) so that you may familiarize yourself with parts and fit, noting the points where cement is to be applied.
- For best results assemble model in the order indicated.

PAINTING YOUR KIT

- Use paint that is made for use on plastic. If you are unsure, test paint on scrap pieces of sprue before applying it to kit parts.
- This kit is designed to be built in sub-assemblies. We would suggest that it is best to paint each sub-assembly separately before final assembly of the kit.

- In certain cases it may be a good idea to paint some parts during assembly. For example, it will be easiest to paint the assembled engine block before adding various other parts, such as the fan and fan belt, which may also be painted individually before cementing in place.

DECAL APPLICATION

Decals have been provided to ensure the utmost detail and authenticity. It may also be easiest to apply decals to sub-assemblies. Apply decals only after paint is completely dry.

1. Dip the decal in water for 10 seconds. For best results, mix one drop of common dish washing detergent per cup of luke-warm water.
2. Place wet decal face up on a paper towel and wait 30-60 seconds until the decal is movable on paper backing.
3. Wet the area of the model to be applied to.
4. Hold the decal face up, in position on model and slide backing away from under it.
5. Once positioned correctly, gently smooth out decal and absorb excess water with a paper towel, cotton swab or clean, soft paintbrush.
6. Let decals dry completely before applying any sort of dull coat or gloss coat to decal area, if desired.

KEY TO PARTS

① Plastic Part ② Decal

SUGGESTED PAINT COLORS

Fan Belt, Radiator Hoses, Pedals (Gas & Brake)	Flat Rubber	Gas Tank	Steel
Radiator, Ignition Coil, Wiring Bundles on Firewall	Flat Black	Brake Master Cylinder	Raw Iron
Shock Absorbers, Engine Block, Oil Pan, Cylinder Heads, Intake Manifold, Air Cleaner Snout, Bell Housing	Gloss Black	Oil Filter	White
Exhaust Headers	Steel	Brake Master Cylinder Cap, Alternator, Exhaust System, Carburetor, Radiator Cap	Aluminum
Bottom of Floor	Oxide Red Primer with Body Color Overspray - See reference photo	Interior Door Handles and Trim, Steering Wheel Horn Ring, Engine Valve Covers, Air Cleaner Body, Valve Covers	Chrome Silver
Engine Compartment Inner Fenders, Radiator Core Support, Firewall, Drive Shaft, Rear Axle, Tie Rods, Front Suspension Parts, Fan, Fan Belt Pulleys, Starter Motor, Breather Caps on Valve Cover, Distributor Cap, Mounting Arms of Pedals (Gas, Brake, Clutch), Horns, Brake Backer Plates	Semi Gloss Black	Tail Light Lenses	Clear Red
		Interior Upholstery, Carpet	Red

NOTE:

Testors - offers a wide range of hobby enamels and lacquers suitable for use on plastic kits although their range of factory matching colors is very limited.

Automotive Lacquer to match factory colors is available from several sources. One such source is Model Car World - find them on line at www.mcworldautomotivefinishes.com. Another, Scale Finishes at www.scalefinishes.com offers factory matched paint in acrylic enamel.

Bob's Paints is another excellent source for automotive lacquer paint and supplies. They can supply both custom and factory colors. Contact them for a complete product list: bobs@paints.com or 262-939-1499

Box art, decals and build-up model by Sean Svendsen.

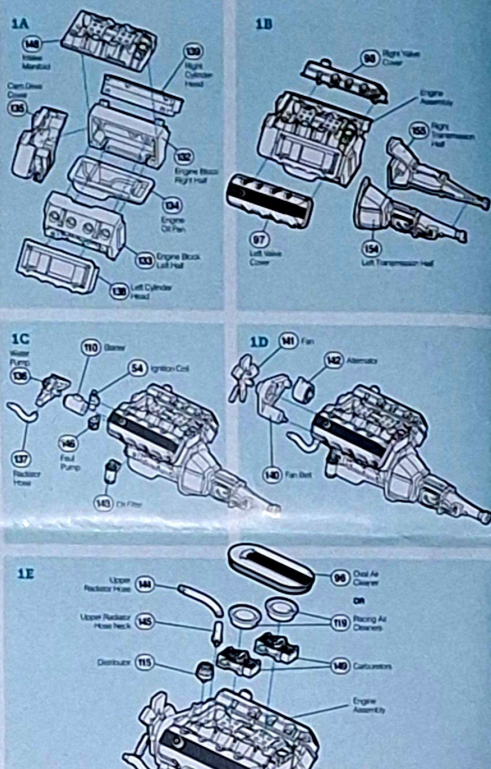
MOEBIUS MODELS
www.moebiusmodels.com

Creative Consultant: Frank Winger
New Product Manager: Dave Matzner - Art Director: Bob Paul

Ford Motor Company Trademarks and Trade Dress used under license to Moebius Models. www.FordMotorCompany.com
Moebius Models, Montclair, California. Made and Printed in China. ©2018 Moebius Models. All Rights Reserved.

1 ENGINE

- A** Cement **Engine Block Left Half** (#133) to **Engine Block Right Half** (#132) add **Engine Oil Pan** (#134) then cement **Intake Manifold** (#148) to **Engine Block** then add **Left Cylinder Head** (#138), **Right Cylinder Head** (#139) and **Cam Drive Cover** (#135).
- B** Cement **Left Transmission Half** (#154) to **Right Transmission Half** (#155) and add the **Transmission Assembly** to the **Engine Assembly** then add **Left Cam Cover** (#97) and **Right Cam Cover** (#98).
- C** Cement **Oil Filter** (#143) and **Fuel Pump** (#146) to left side of **Engine**. Cement **Starter** (#110) to right side of **Engine**, add **Ignition Coil** (#54) to left front of **Cam Drive Cover** attach **Water Pump** (#136) to **Cam Drive Cover**. See location of **Lower Radiator Hose** (#137) and remember it for installation of the part later.
- D** Cement **Alternator** (#142) to **Fan Belt** (#140) then insert **Fan** (#141) into **Fan Belt** cement them to the front of **Cam Drive Cover** and **Water Pump**.
- E** Install **2X Carburetors** (#149) to **Intake Manifold** followed by **Distributor** (#115) then decide if you'll use **2x Racing Air Cleaners** (#119) OR **Oval Air Cleaner** (#96) and cement your choice in place to **Carburetors**, then complete **Engine Assembly** by adding **Upper Radiator Hose Neck** (#145) and see location of **Upper Radiator Hose** (#144) and remember it for installation of the part later set the **Engine Assembly** aside for now.



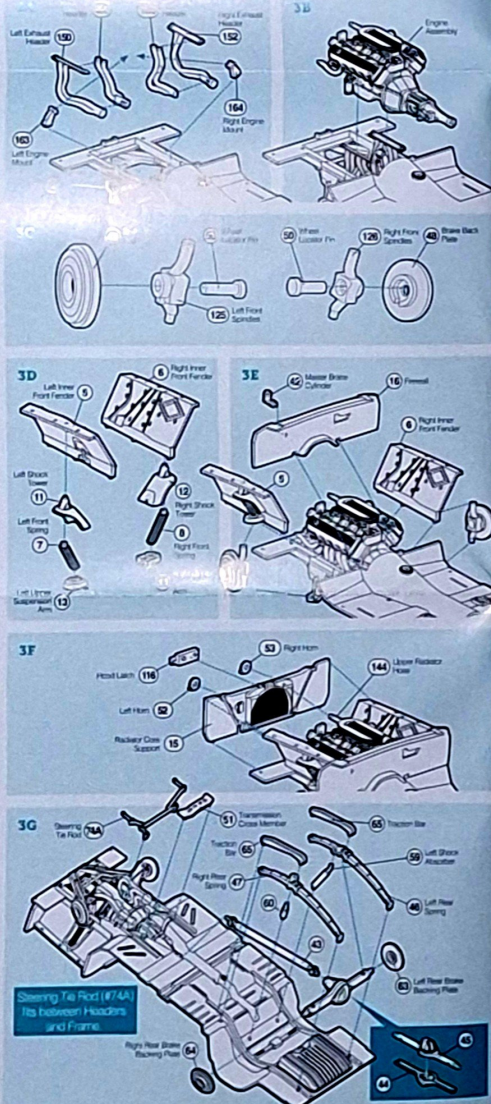
2 WHEELS & TIRES

- A** Insert **Front Wheels** (#95) into **Front Tires** (#141). Do this twice.
- B** Insert **Rear Wheels** (#94) into **Drag Slicks** (#140). Do this twice.



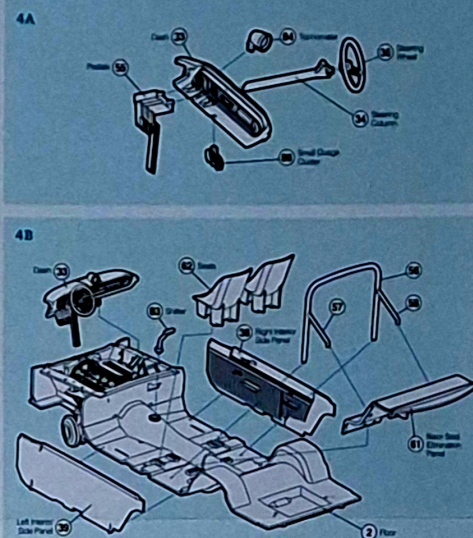
3 CHASSIS

- A** Cement **Left Engine Mount** (#163) and **Right Engine Mount** (#164) to **Frame** (#2). Assemble **Left Exhaust Header** (parts #150 & #151) and **Right Exhaust Header** (parts #152 & #153).
- B** Position **Exhaust Header Assemblies** in **Frame** - center space between **Header Tubes** should be over **Engine Mounts** then locate **Engine Assembly** in place and cement **Header Assemblies** to **Engine Assembly**.
- Now cement **Engine Assembly** with **Header Assemblies** to **Frame**.
- C** Cement the **Wheel Locator Pins** (#50) into the **Left Front Spindles** (#125) and the **Right Front Spindles** (#126). Add the **Brake Back Plates** (#48).
- D** Cement **Left Shock Tower** (#11) to **Left Inner Front Fender** (#5) followed by **Left Front Spring** (#7) and **Left Upper Suspension Arm** (#13). Then cement **Right Shock Tower** (#12) to **Right Inner Front Fender** (#6) followed by **Left Front Spring** (#8) and **Left Upper Suspension Arm** (#14).
- E** Cement **Brake Master Cylinder** (#42) to **Firewall** (#16) and cement **Firewall** to **Frame** (#147). Then locate **Spindles** to **Frame** and cement **Left Inner Front Fender** (#5) and **Right Inner Front Fender** (#6) in place paying attention that **Spindles** are correctly placed **Left** and **Right**.
- F** Cement **Lower Radiator Hose** (#137) and **Upper Radiator Hose** (#144) in place. Then cement **Radiator Core Support** (#15) in place making sure that **Radiator Hoses** are properly located. Then add **Left Horn** (#52), **Right Horn** (#53) and add **Hood Latch** (#116).



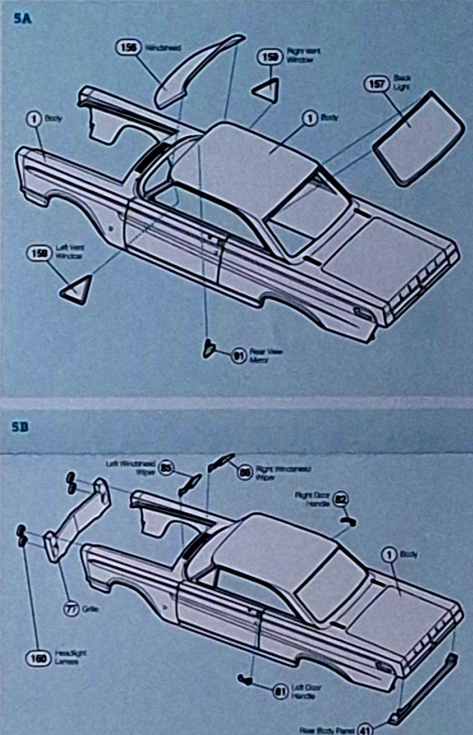
4 INTERIOR

- A** Cement **Pedals** (#55), **Tachometer** (#84) and **Small Gauge Cluster** (#68) to **Dash** (#33). Cement **Steering Wheel** (#35) to **Steering Column** (#34) and cement in place on the **Dash** (#33).
- B** Cement **Left Interior Side Panel** (#39) and **Right Interior Side Panel** (#38) to **Floor** (#2) followed by **Back Seat Elimination Panel** (#81). Then install the **Dash**. Then cement **Shifter** (#83) and **Seats** (#62) in place. Then assemble **Roll Bar** (#56, #57 & #58) and install it to the interior.



5 BODY

- A** Install **Rear View Mirror** (#91) to inside of **Body** (#1) roof. Add **Left Vent Window** (#158) and **Right Vent Window** (#159). Please note that these fit into the **Body** (#1) from the **INSIDE**. Cement the **Windshield** (#156) and **Backlight** (#157) to the **Body**. Please note that these fit to the **Body** from the **OUTSIDE**.
- B** Carefully cement the four **Headlight Lenses** (#160) to the **Grille** (#77) and cement the **Grille** to the **Body** followed by **Rear Body Panel** (#41). Attach **Left Door Handles** (#81) and **Right Door Handles** (#82). Decide if you want to use **Left Windshield Wiper** (#85) and **Right Windshield Wiper** (#86) as most AFX cars were raced without them.



6 FINAL ASSEMBLY

- A** Install the **Body** on the **Chassis Assembly**. Then cement the **Stone Shield** (#40) to the **Front Bumper** (#78) and attach the **Front Bumper Assembly** to the **Body**. Cement **Rear Bumper** (#79) and **Tail Light Panel** (#80) to **Body**. Add **Front and Rear Wheel/Tire Assemblies** and **Hood** (#4) to complete your **Armie Beswick 1965 AFX Comet**.

