

To create the best connections

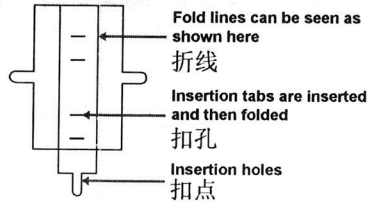
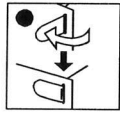
组装基本步骤示意图

● Insert tab and bend 90° degrees for most visible areas

● 插入扣孔, 平折90°

▲ Insert tab and bend 90° degrees is best in some areas to ensure a tight connection

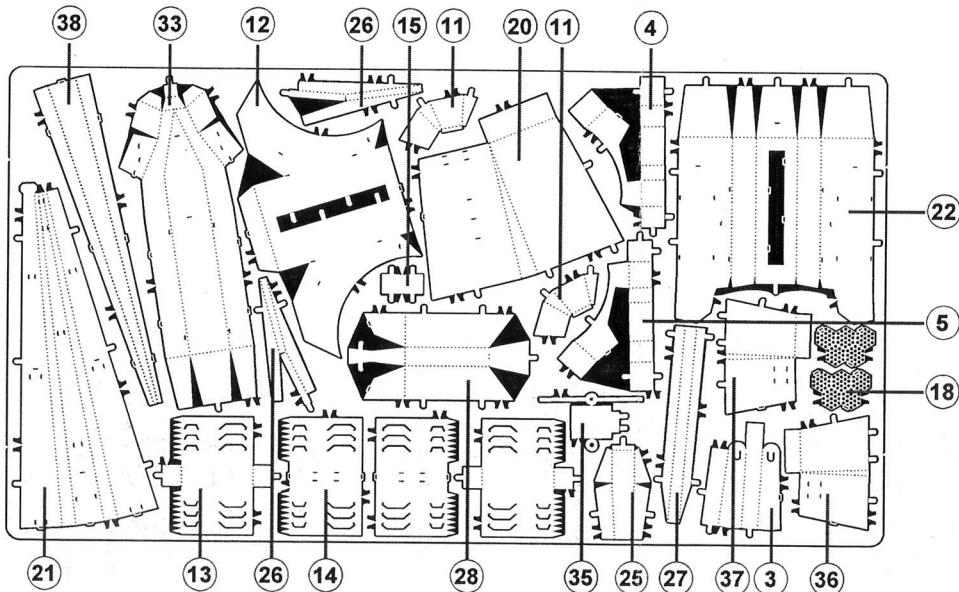
▲ 插入扣孔, 旋转90°



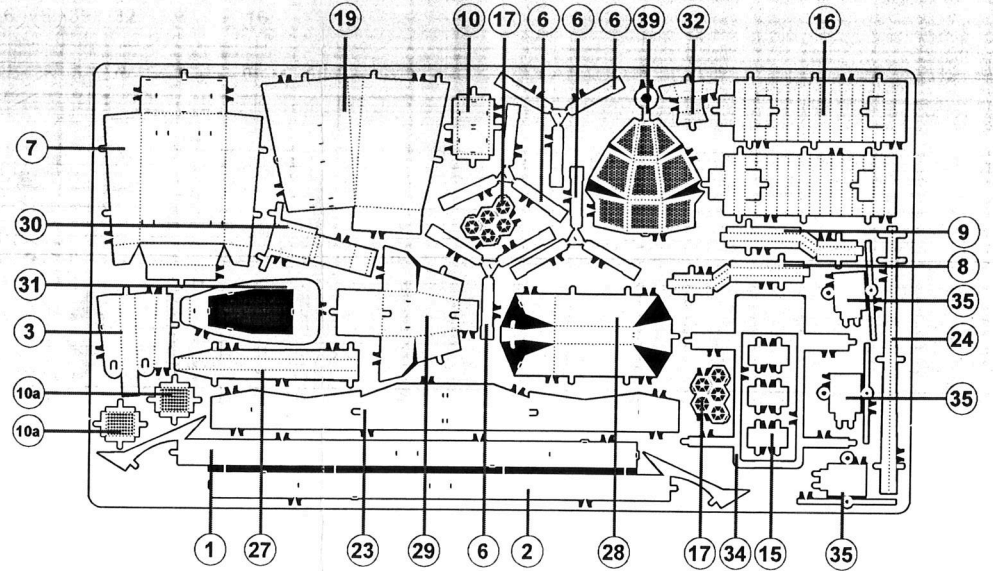
Needle nose pliers are helpful for assembly
拼装工具



Metal sheet 金属部件



⚠ Notes: In order to avoid possible injury from sharp edges, please carefully discard the metal sheet after parts have been removed. This product is not a toy. Keep out of reach of children.
请小心处理金属边料, 以防刮伤



Assembly flow chart
拼装步骤

